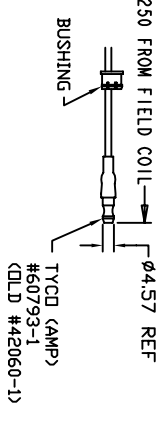
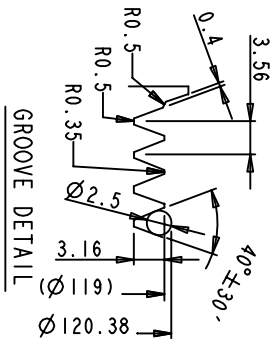
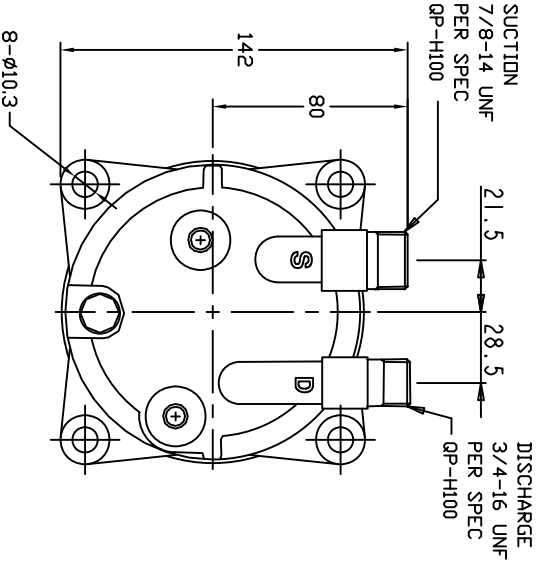
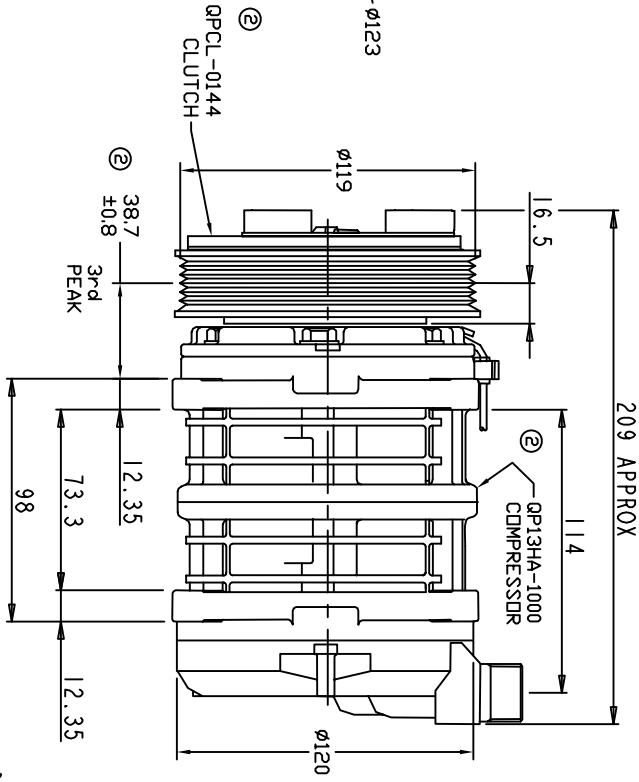
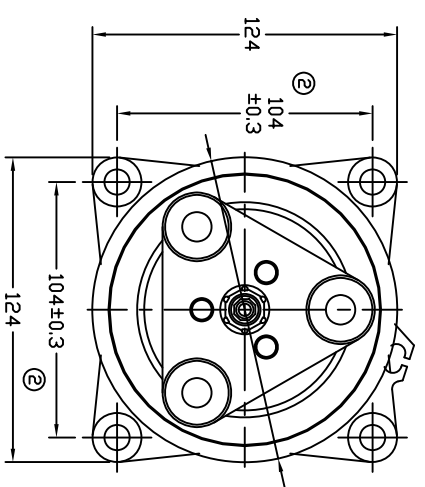


REVISIONS		DATE	APPROVED
CHANGE ORDER	LTR	DESCRIPTION	
008023	1	PAG 46 was PAG 100	08/22/08
009035	2	ADDED TOLERANCES & PART NDS	09/10/09



250 FROM FIELD COIL REF

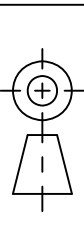


- B CLUTCH SPECIFICATIONS:**
- VOLTAGE.....12 VDC
  - BELT.....PV6
  - STATIC TORQUE.....
  - INITIAL AFTER BURNISHING.....35 Nm (3.5 Kgfm)
  - MAX POWER CONSUMPTION.....49 Nm (5 Kgfm)
  - ROTATION DIRECTION.....45W @ 25°C
  - ROTATION DIRECTION.....CW OR CCW
  - WEIGHT.....2.28 Kg

- A COMPRESSOR SPECIFICATIONS:**
- MODEL.....QP13
  - NUMBER OF CYLINDERS.....6
  - BORE X STROKE.....36 X 21.4 mm
  - DISPLACEMENT.....131 cm<sup>3</sup>/REV
  - SPEED RANGE.....700 - 6000 RPM
  - ROTATION DIRECTION.....CW OR CCW
  - REFRIGERANT.....R-134a
  - LUBRICANT.....PAG 46 150+20 cm<sup>3</sup>
  - WEIGHT.....4.4 Kg

UNLESS OTHERWISE SPECIFIED DIMENSIONS ARE IN MM PER INTERPRET DIM AND TOL PER ASME Y14.5M - 1994

THIRD ANGLE PROJECTION



**MOORE PRODUCTS, LLC**

TITLE  
COMPRESSOR ASSEMBLY

QP13 V-3/4 7/8  
PV6 119mm 12V 3-EYE

SCALE NONE SHEET 1 OF 1