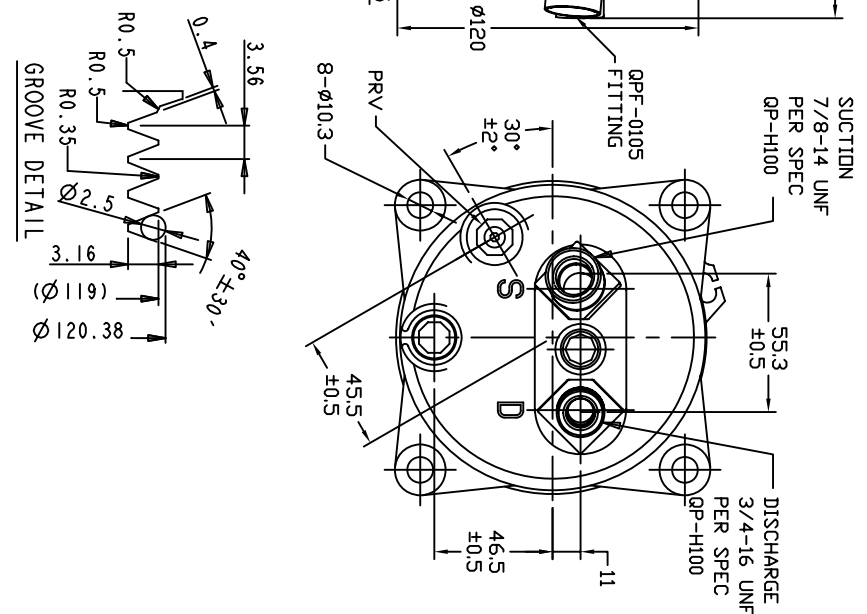
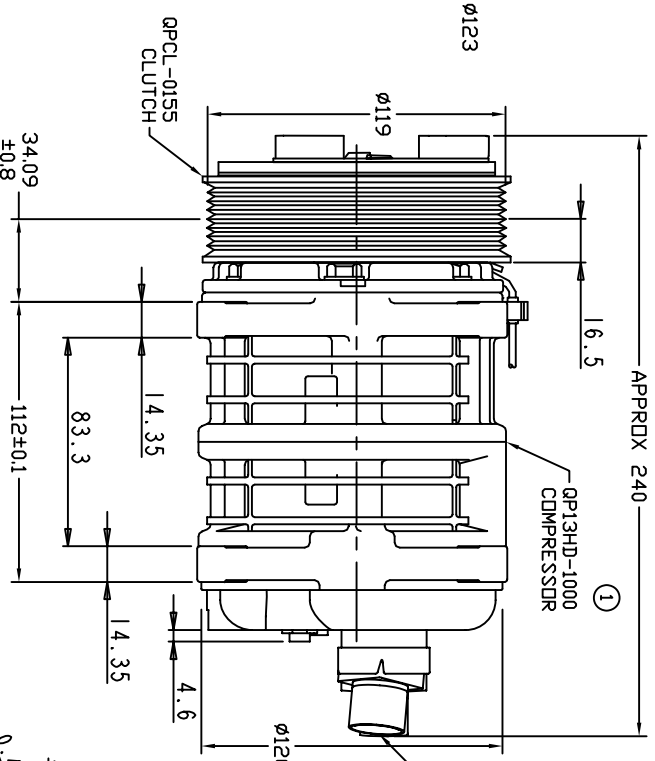
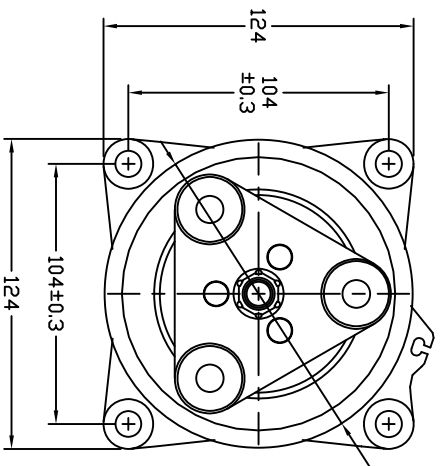
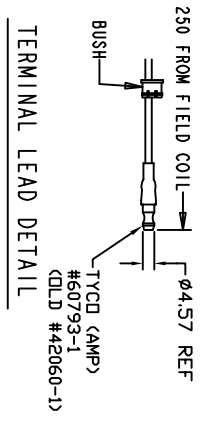


REVISIONS		DATE	APPROVED
CHANGE ORDER	LTR	DESCRIPTION	
ENG	1	ADDED PART NO	
		08/14/09	



CLUTCH SPECIFICATIONS:

- VOLTAGE..... 12 VDC
- BELT..... PV8
- STATIC TORQUE..... 35 Nm (3.5 Kgfm)
- INITIAL AFTER BURNISHING..... 49 Nm (5 Kgfm)
- MAX POWER CONSUMPTION..... 45W @ 25°C
- ROTATION DIRECTION..... CW OR CCW
- WEIGHT..... 2.3 Kg

COMPRESSOR SPECIFICATIONS:

- MODEL..... QP-13 HD
- NUMBER OF CYLINDERS..... 6
- BORE X STROKE..... 36 X 21.4 mm
- DISPLACEMENT..... 131 cm³/REV
- SPEED RANGE..... 700 - 6000 RPM
- ROTATION DIRECTION..... CW OR CCW
- REFRIGERANT..... R-134a
- LUBRICANT..... PAG 46 150+20 cm³
- WEIGHT..... 4.5 Kg

UNLESS OTHERWISE SPECIFIED
DIMENSIONS ARE IN MM. PER
INTERPRET DIM AND TOL. PER
ASME Y14.5M - 1994

ROQUE PRODUCTS, LLC

THIRD ANGLE PROJECTION	CAD GENERATED DRAWING, DO NOT MANUALLY UPDATE	TITLE
	DRWN GLB DATE 08/21/09	COMPRESSOR ASSEMBLY
	CHECKED APPROVED	QP-13 HD, H-MANIFOLD
	ENG APPVL	PV8 12V 119 3-EYE
	FINISH	SCALE NONE
		SHEET 1 OF 1