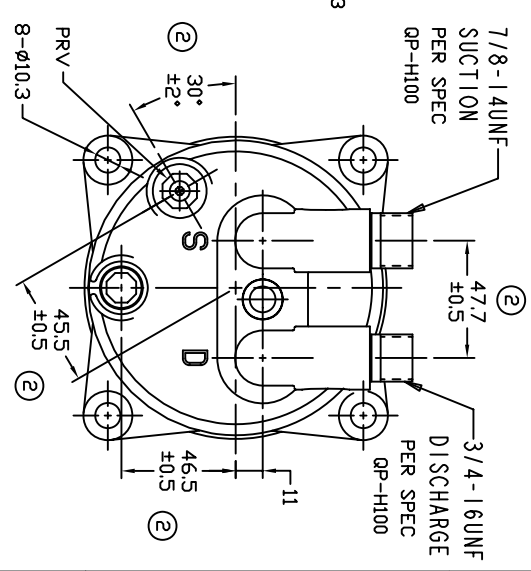
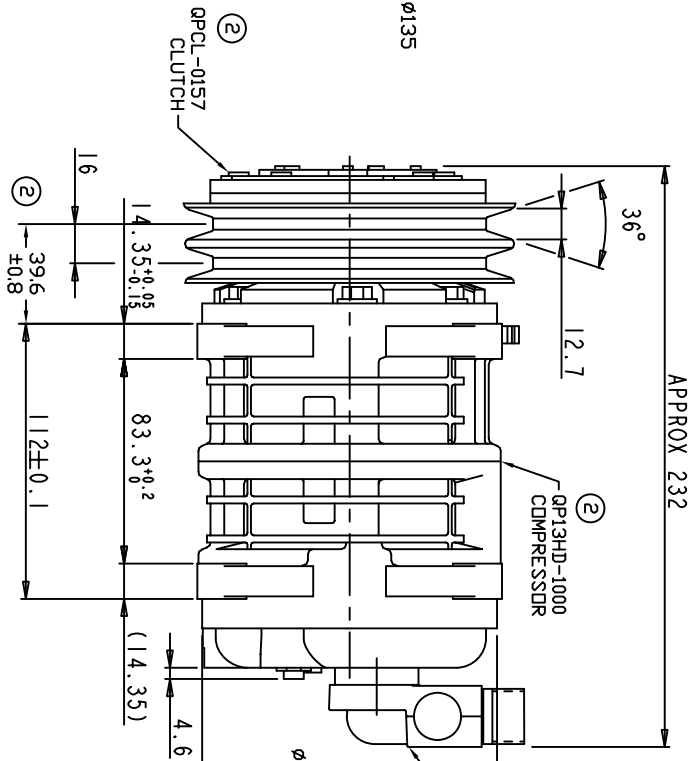
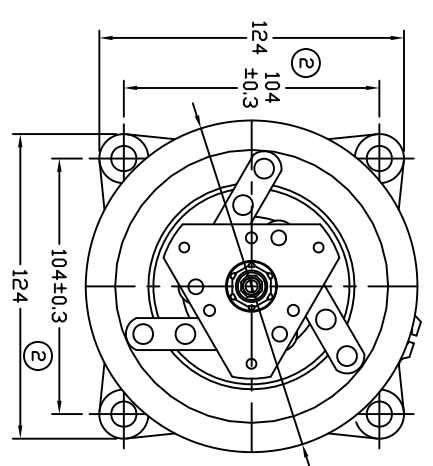


TERMINAL LEAD DETAIL



REVISIONS		DESCRIPTION	DATE	APPROVED
CHANGE ORDER	REV			
008023	1	PAG 46 was PAG 100	08/22/08	
009035	2	ADDED TOLERANCES & PART NOS	09/21/09	

CLUTCH SPECIFICATIONS:

- VOLTAGE.....12 VDC
- BELT.....A2
- STATIC TORQUE
INITIAL.....35 Nm (3.5 Kgfm)
AFTER BURNISHING.....49 Nm (5 Kgfm)
- MAX POWER CONSUMPTION.....45W @ 25°C
- ROTATION DIRECTION.....CW OR CCW
- WEIGHT.....2.25 Kg

COMPRESSOR SPECIFICATIONS:

- MODEL.....QP13HD
- NUMBER OF CYLINDERS.....6
- BORE X STROKE.....36 X 21.4 mm
- DISPLACEMENT.....131 cm³/REV
- SPEED RANGE.....700 - 6000 RPM
- ROTATION DIRECTION.....CW OR CCW
- REFRIGERANT.....R-134g
- LUBRICANT.....PAG 46 ISO+20cm3
- WEIGHT.....4.5 Kg

UNLESS OTHERWISE SPECIFIED DIMENSIONS ARE IN MILLIMETERS INTERPRET DIM AND TOL PER ASME Y14.5M - 1994



THIRD ANGLE PROJECTION		CAD GENERATED DRAWING; DO NOT MANUALLY UPDATE		TITLE	
FINISH	APPROVED	DATE	DATE	TITLE	COMPRESSION ASSEMBLY
ENG APPVL	CHECKED	02/27/08	02/27/08	MODEL	QP13HD V-3/4 7/8
	APPROVED			SIZE	A2 135mm LEAF SPRING 12V
	ENG APPVL			SCALE	NONE
				SHEET	1 OF 1
				REV	2