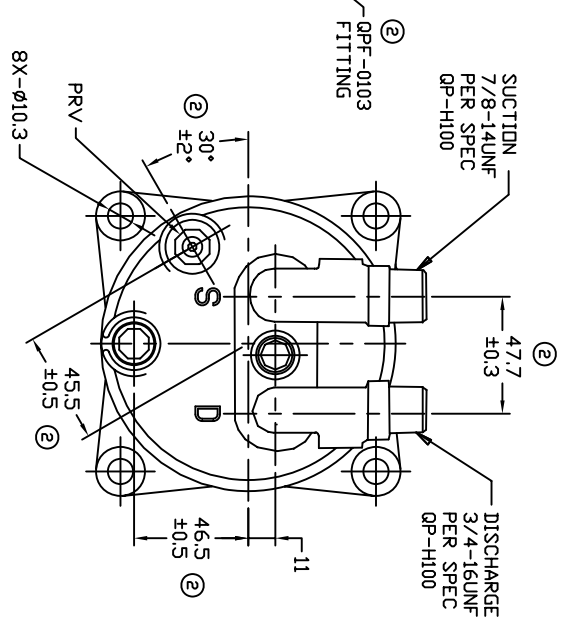
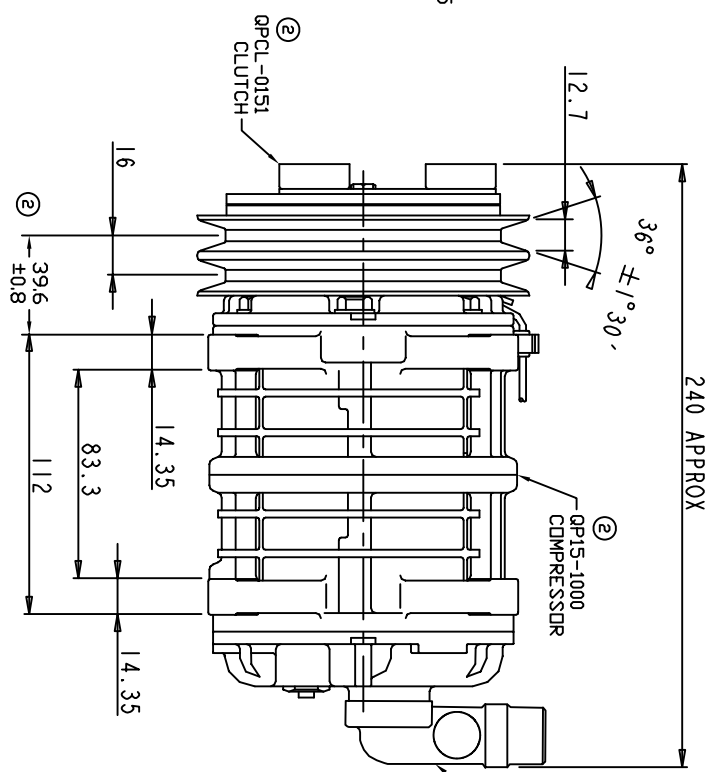
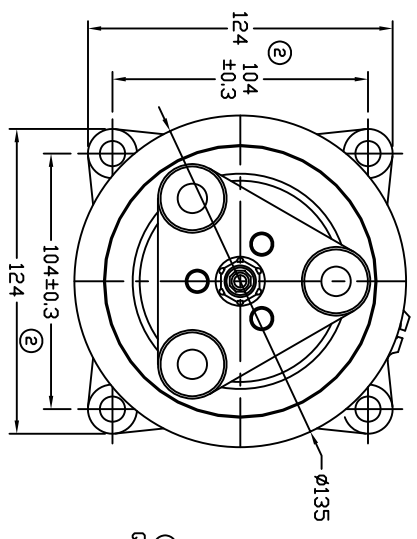


TERMINAL LEAD DETAIL

REVISIONS		DATE	APPROVED
CHANGE ORDER	LTR	DESCRIPTION	
008023	1	PAG 46 was PAG 100	08/22/08
009035	2	ADDED TOLERANCES & PART NOS	09/21/09



CLUTCH SPECIFICATIONS:

- VOLTAGE.....12 VDC
- BELT.....A2
- STATIC TORQUE.....A2
- INITIAL.....35 Nm (3.5 Kgfm)
- AFTER BURNISHING.....49 Nm (5 Kgfm)
- MAX POWER CONSUMPTION.....45W @ 25°C
- ROTATION DIRECTION.....CW OR CCW
- WEIGHT.....2.25 Kg

COMPRESSOR SPECIFICATIONS:

- MODEL.....QP15HD
- NUMBER OF CYLINDERS.....6
- BORE X STROKE.....36 X 24.0 mm
- DISPLACEMENT.....146.7 cm³/REV
- SPEED RANGE.....700 - 6000 RPM
- ROTATION DIRECTION.....CW OR CCW
- REFRIGERANT.....R-134a
- LUBRICANT.....PAG 46 150+20 cms
- WEIGHT.....4.4 Kg

UNLESS OTHERWISE SPECIFIED DIMENSIONS ARE IN MM PER ASME Y14.5M - 1994

THIRD ANGLE PROJECTION

FINISH

SCALE NONE

UNLESS OTHERWISE SPECIFIED DIMENSIONS ARE IN MM PER ASME Y14.5M - 1994	CAD GENERATED DRAWING; DO NOT MANUALLY UPDATE	DATE
THIRD ANGLE PROJECTION	GLB	06/21/07
CHECKED	APPROVED	
FINISH	ENG APPVL	

DAVE PRODUCTS, LLC

TITLE: COMPRESSOR ASSEMBLY
 QP15HD V-3/4 7/8
 A2 135mm 12V 3-EYE

SIZE: A
 CODE IDENT NO: QP15-1152
 DWG NO: QP15-1152

SCALE: NONE

SHEET 1 OF 1