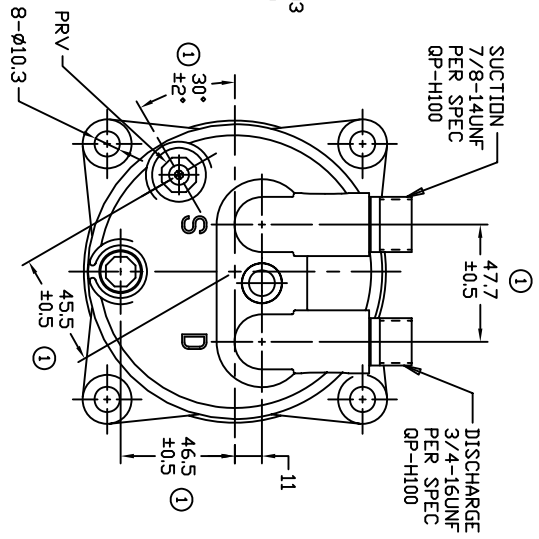
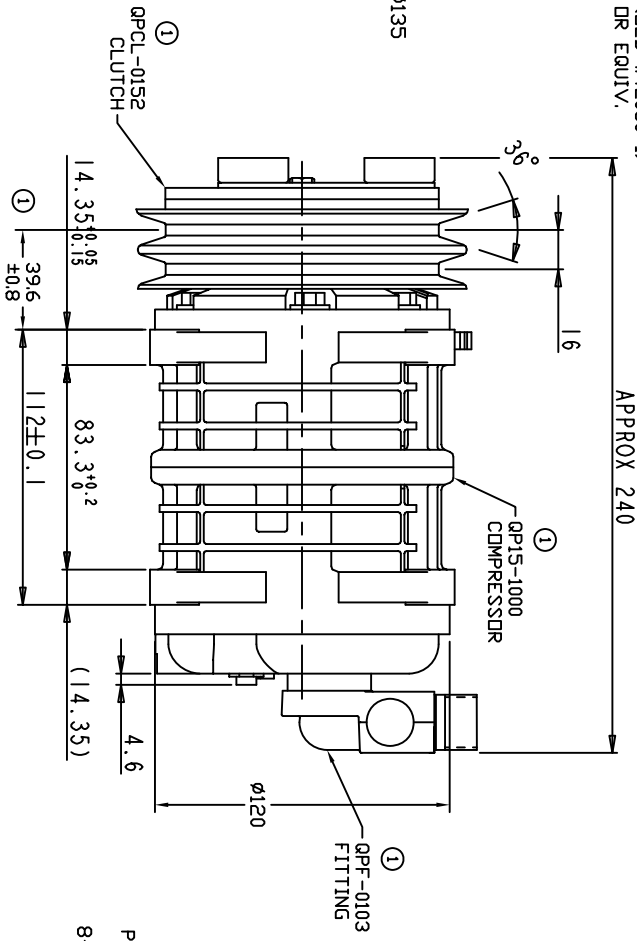
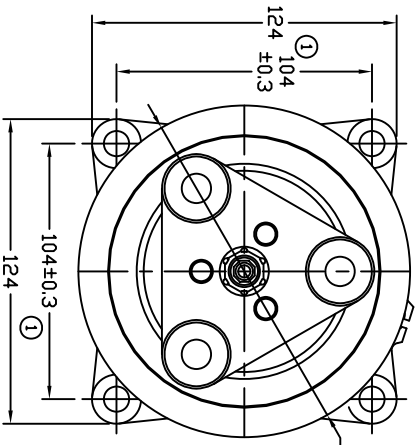
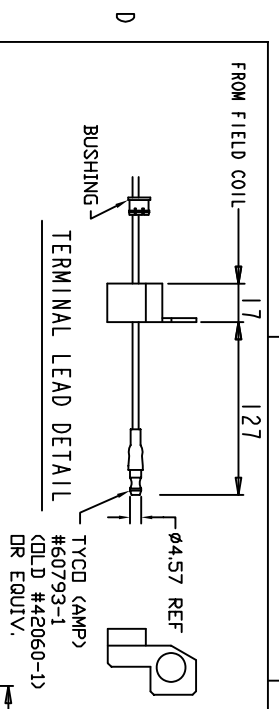


REVISIONS		DATE	APPROVED
CHANGE ORDER	LTR	DESCRIPTION	
009035	1	ADDED TOLERANCES & PART NOS	
		10/27/09	



- B CLUTCH SPECIFICATIONS:**
- VOLTAGE.....12 VDC
 - BELT.....A2
 - STATIC TORQUE.....
INITIAL.....
AFTER BURNISHING.....35 Nm (3.5 Kgfm)
 - MAX POWER CONSUMPTION.....49 Nm (5 Kgfm)
45W @ 25°C
 - ROTATION DIRECTION.....CW OR CCW
 - WEIGHT.....2.25 Kg

- A COMPRESSOR SPECIFICATIONS:**
- MODEL.....QP15HD
 - NUMBER OF CYLINDERS.....6
 - BORE X STROKE.....36 X 24.0 mm
 - DISPLACEMENT.....146.7 cm³/REV
 - SPEED RANGE.....700 - 6000 RPM
 - ROTATION DIRECTION.....CW OR CCW
 - REFRIGERANT.....R-134g
 - LUBRICANT.....PAG 46 150-20 cm3
 - WEIGHT.....4.4 Kg

UNLESS OTHERWISE SPECIFIED DIMENSIONS ARE IN MM. PER INTERPRET DIM AND TOL PER ASME Y14.5M - 1994		CAD GENERATED DRAWING; DO NOT MANUALLY UPDATE	
THIRD ANGLE PROJECTION	CHECKED	GLB	DATE 06/27/08
FINISH	APPROVED	ENG APPVL	

ROQUE PRODUCTS, LLC

TITLE: COMPRESSOR ASSEMBLY
QP15HD, VERTICAL FITTING
A2 135mm 12V 3-EYE

SCALE: NONE

SHEET 1 OF 1