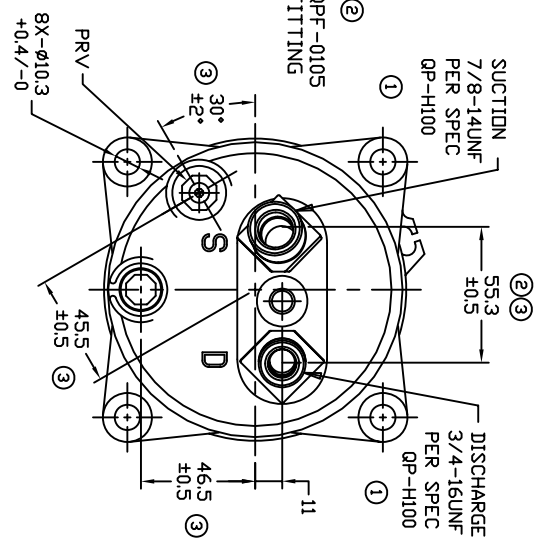
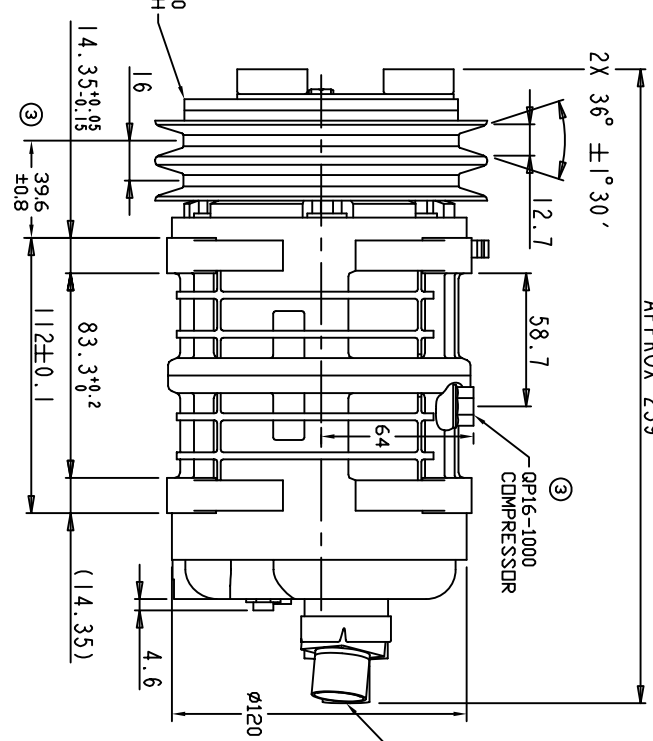
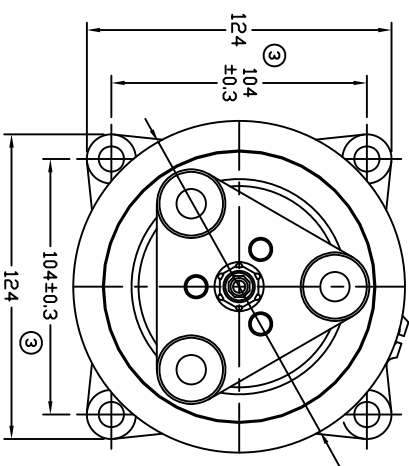


250 FROM FIELD COIL REF

REVISIONS				
CHANGE ORDER	LTR	DESCRIPTION	DATE	APPROVED
008023	1	PAG 46 WAS PAG 100, ADDED QP-H100 SPEC	08/25/08	
009032	2	55.3 WAS 58, ADDED #QP-F-0105	07/22/09	
009035	3	ADDED TOLERANCES & PART NDS	10/30/09	



CLUTCH SPECIFICATIONS:

- VOLTAGE..... 24 VDC
- BELT..... A2
- STATIC TORQUE..... 35 Nm (3.5 Kgfm)
- INITIAL AFTER BURNISHING..... 49 Nm (5 Kgfm)
- MAX POWER CONSUMPTION..... 45W @ 25°C
- ROTATION DIRECTION..... CW OR CCW
- WEIGHT..... 2.25 Kg

COMPRESSOR SPECIFICATIONS:

- MODEL..... QP16HD
- NUMBER OF CYLINDERS..... 6
- BORE X STROKE..... 36 X 26.7 mm
- DISPLACEMENT..... 162.9 cm³/REV
- SPEED RANGE..... 700 - 6000 RPM
- ROTATION DIRECTION..... CW OR CCW
- REFRIGERANT..... R-134a
- LUBRICANT..... PAG 46 180 +20 cm³
- WEIGHT..... 4.7 Kg

UNLESS OTHERWISE SPECIFIED DIMENSIONS ARE IN MM. PER INTERPRET DIM AND TOL. PER ASME Y14.5M - 1994

DO NOT MANUALLY UPDATE

THIRD ANGLE PROJECTION	CAD GENERATED DRAWING, DO NOT MANUALLY UPDATE	DATE	TITLE
CHECKED	CLB	08/09/07	COMPRESSOR ASSEMBLY
APPROVED			QP16HD H-3/4 7/8
FINISH	ENG APPVL		A2 135mm 24V 3-EYE



SCALE: NONE	SHEET 1 OF 1
SIZE A	REV 3
CODE IDENT NO	QP16-1182
DWG NO	