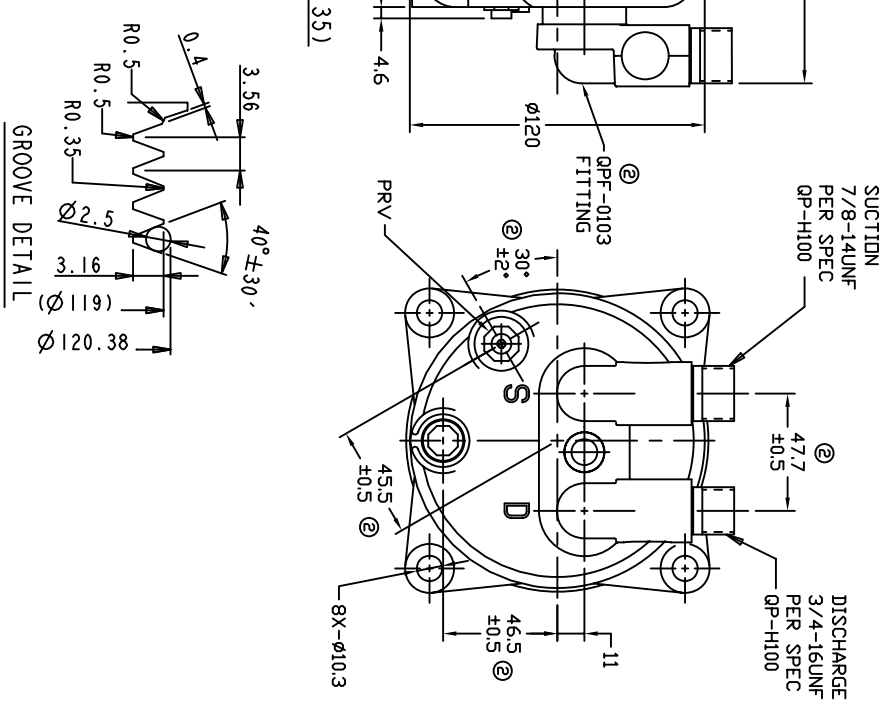
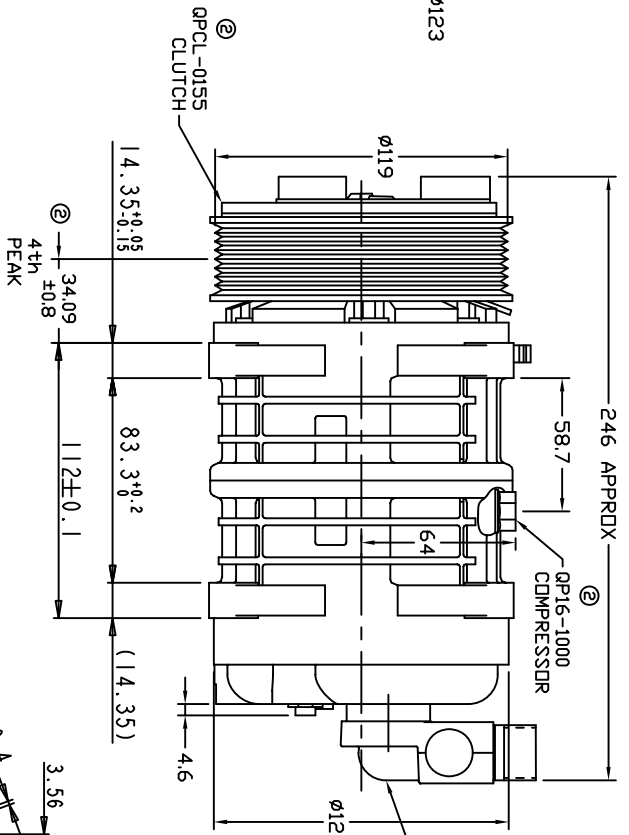
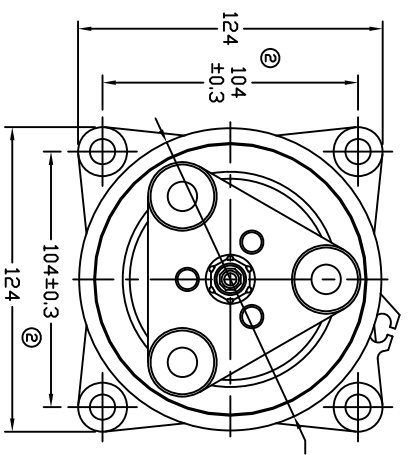
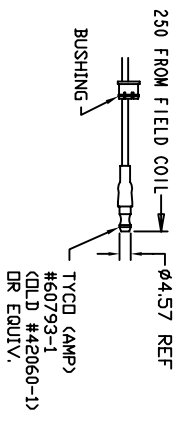


REVISIONS		DATE	APPROVED
CHANGE ORDER	LTR	DESCRIPTION	
008023	1	PAG 46 was PAG 100	08/25/08
009035	2	ADDED TOLERANCES & PART NOS	11/02/09



**CLUTCH SPECIFICATIONS:**

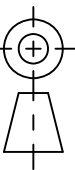
- VOLTAGE..... 12 VDC
- BELT..... PV8
- STATIC TORQUE.....
- INITIAL AFTER BURNISHING..... 35 Nm (3.5 Kgf·m)
- MAX POWER CONSUMPTION..... 49 Nm (5 Kgf·m)
- ROTATION DIRECTION..... 45W @ 25°C
- WEIGHT..... CW OR CCW
- WEIGHT..... 2.30 Kg

**COMPRESSOR SPECIFICATIONS:**

- MODEL..... QP16HD
- NUMBER OF CYLINDERS..... 6
- BORE X STROKE..... 36 X 26.7 mm
- DISPLACEMENT..... 162.9 cm<sup>3</sup>/REV
- SPEED RANGE..... 700 - 6000 RPM
- ROTATION DIRECTION..... CW OR CCW
- REFRIGERANT..... R-134a
- LUBRICANT..... PAG 46 180+20 cm<sup>3</sup>
- WEIGHT..... 4.7 Kg

UNLESS OTHERWISE SPECIFIED  
 DIMENSIONS ARE IN MM. PER  
 INTERPRET DIM AND TOL. PER  
 ASME Y14.5M - 1994

THIRD ANGLE PROJECTION



CAD GENERATED DRAWING; DO NOT MANUALLY UPDATE	DATE
GLB	06/21/07
CHECKED	
APPROVED	
ENG APPVL	



TITLE  
 COMPRESSOR ASSEMBLY

QP16 HD V-3/4 7/8  
 PV8 119mm 12V 3 EYE

SIZE A CODE IDENT NO DWG NO QP16-1195

SCALE NONE SHEET 1 OF 1

REV 2