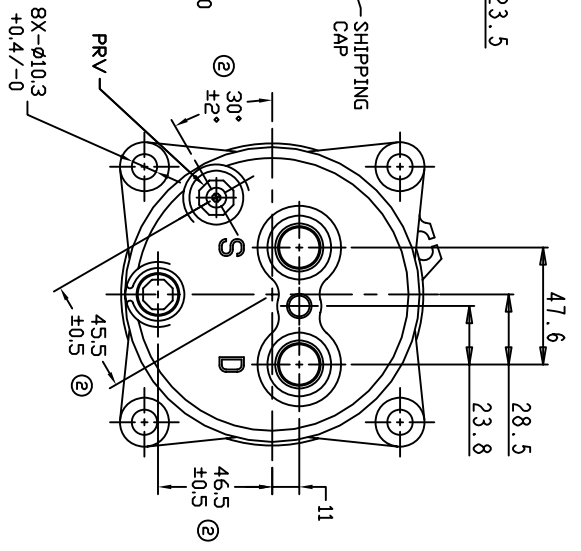
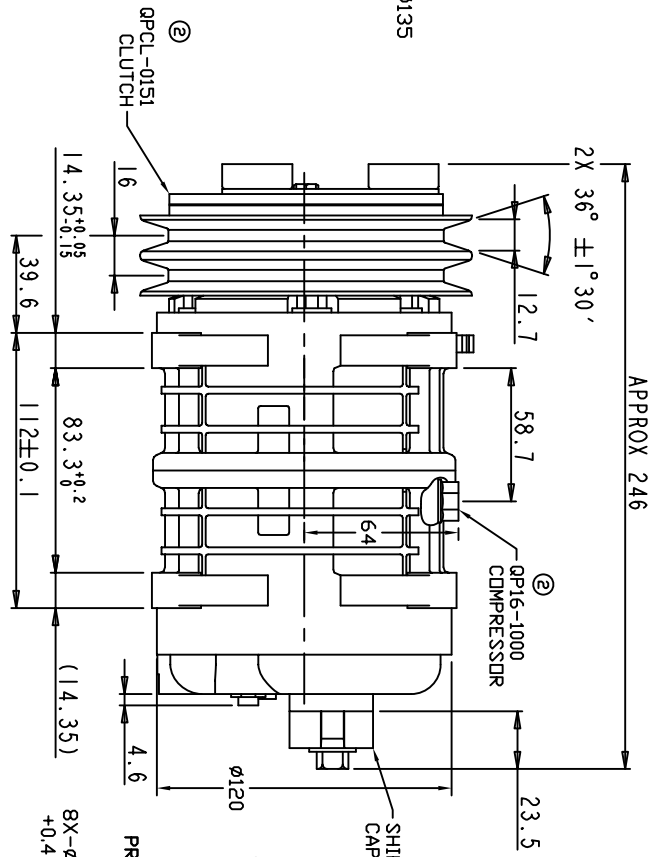
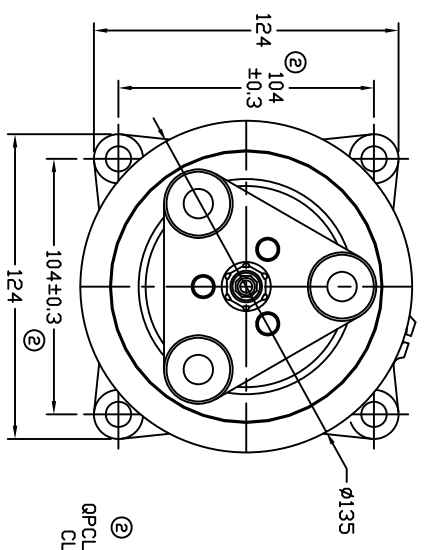
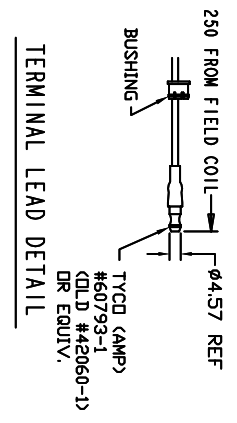


REVISIONS			DATE	APPROVED
CHANGE ORDER	LTR	DESCRIPTION		
008023	1	PAG 46 was PAG 100	08/26/08	
009035	2	ADDED TOLERANCES & PART NOS	10/14/09	



- CLUTCH SPECIFICATIONS:**
- VOLTAGE..... 12 VDC
 - BELT..... A2
 - STATIC TORQUE..... 35 Nm (3.5 Kgfm)
 - INITIAL.....
 - AFTER BURNISHING..... 49 Nm (5 Kgfm)
 - MAX POWER CONSUMPTION..... 45W @ 25°C
 - ROTATION DIRECTION..... CW OR CCW
 - WEIGHT..... 2.25 Kg

- COMPRESSOR SPECIFICATIONS:**
- MODEL..... QP-16HD
 - NUMBER OF CYLINDERS..... 6
 - BORE X STROKE..... 36 X 26.7 mm
 - DISPLACEMENT..... 162.9 cm³/REV
 - SPEED RANGE..... 700 - 6000 RPM
 - ROTATION DIRECTION..... CW OR CCW
 - REFRIGERANT..... R-134a
 - LUBRICANT..... PAG 46 180+20cm³
 - WEIGHT..... 4.7 Kg

UNLESS OTHERWISE SPECIFIED
DIMENSIONS ARE IN MM PER
INTERPRET DIM AND TOL PER
ASME Y14.5M - 1994

DAQUE PRODUCTS, LLC

COMPRESSOR ASSEMBLY
QP-16 HD
A2 135MM 12V 3-EYE

THIRD ANGLE PROJECTION	FINISH	CAD GENERATED DRAWING, DO NOT MANUALLY UPDATE	SCALE: NONE
CHECKED	APPROVED	DATE: 11/26/07	SHEET 1 OF 1
APPROVED	ENG APPVL	TITLE: COMPRESSOR ASSEMBLY	REV 2