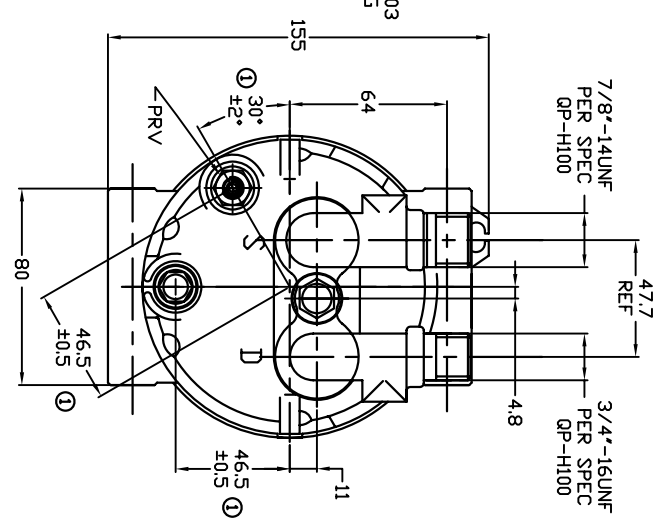
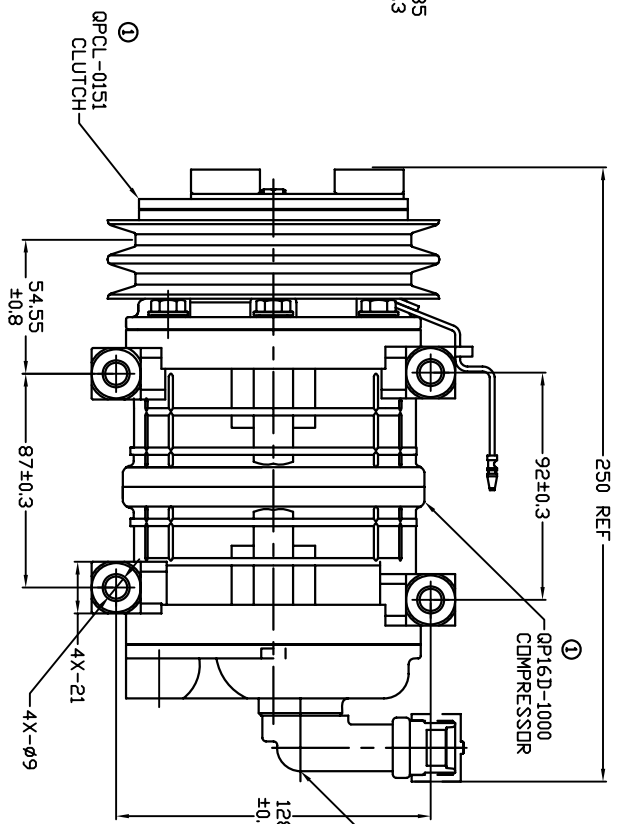
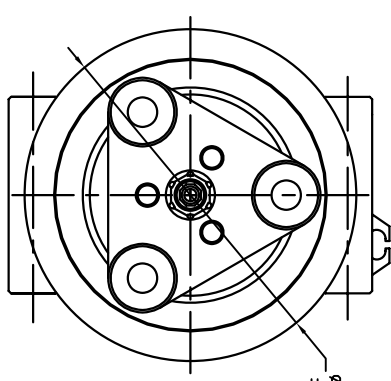


TERMINAL LEAD DETAIL

REVISIONS		DESCRIPTION	DATE	APPROVED
CHANGE ORDER	LTR			
009035	1	ADDED TOLERANCES & PART NDS	11/05/09	



CLUTCH SPECIFICATIONS:

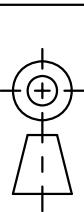
- VOLTAGE..... 12 VDC
- BELT..... A2
- STATIC TORQUE..... 35 Nm (3.5 kgfm)
- INITIAL AFTER BURNISHING..... 49 Nm (5 kgfm)
- MAX POWER CONSUMPTION..... 45W @ 25°C
- ROTATION DIRECTION..... CW OR CCW
- WEIGHT..... 2.25 Kg

COMPRESSOR SPECIFICATIONS:

- MODEL..... QP16HD
- NUMBER OF CYLINDERS..... 6
- BORE X STROKE..... 36 X 26 7/8 mm
- DISPLACEMENT..... 162.9 cm³/REV
- SPEED RANGE..... 700 - 6000 RPM
- ROTATION DIRECTION..... CW
- REFRIGERANT..... R-134g
- LUBRICANT..... PAG 46 180+20cm³
- WEIGHT..... 4.7 Kg

UNLESS OTHERWISE SPECIFIED
DIMENSIONS ARE IN MM PER
INTERPRET DIM AND TOL PER
ASME Y14.5M - 1994

THIRD ANGLE PROJECTION



CAD GENERATED DRAWING; DO NOT MANUALLY UPDATE	DATE
DRAWN GLB	08/11/08
CHECKED	
APPROVED	
ENG APPVL	



TITLE
COMPRESSOR ASSEMBLY
QP16HD V-3/4 7/8

SIZE CODE IDENT NO DWG NO
A A2 135mm 12V 3-EYE
QP16-1672

SCALE NONE SHEET 1 OF 1