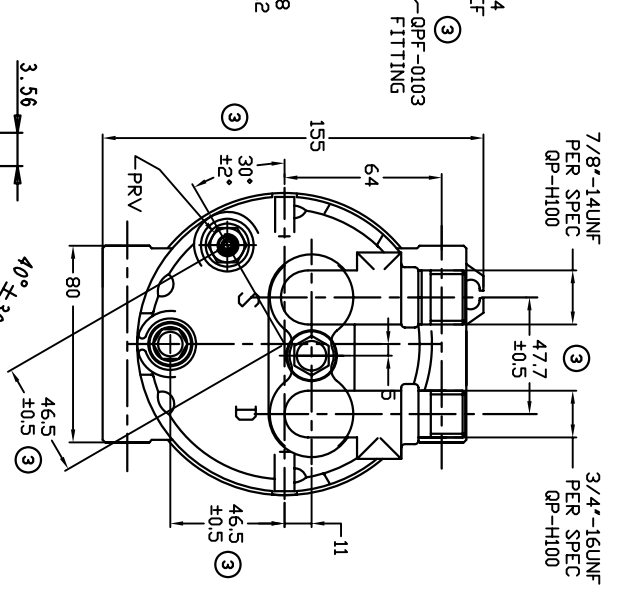
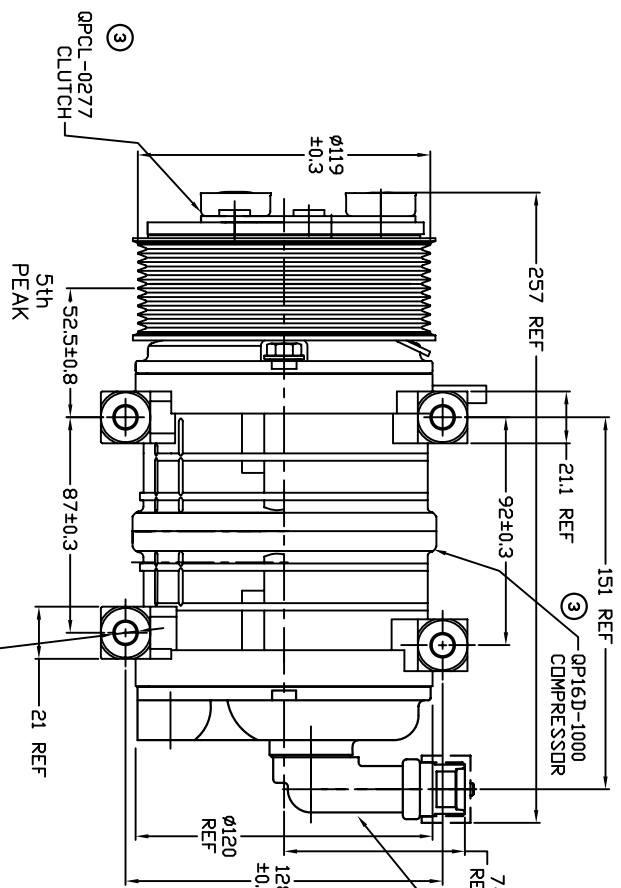
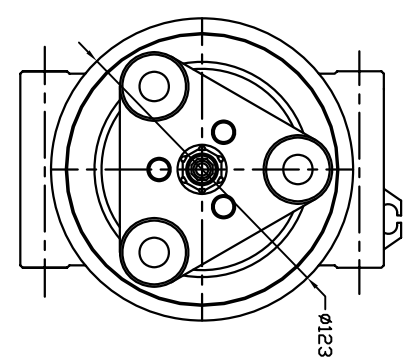


TERMINAL LEAD DETAIL

| CHANGES      |     | REVISIONS                            |          |
|--------------|-----|--------------------------------------|----------|
| CHANGE ORDER | LTR | DESCRIPTION                          | DATE     |
| ENG          | 1   | ADDED Ø123, 'V' VAS 'H'              | 03/05/08 |
| 008023       | 2   | ADDED PAG 46                         | 08/26/08 |
| 009035       | 3   | REDRAWN- ADDED TOLERANCES & PART NOS | 11/06/09 |



**CLUTCH SPECIFICATIONS:**

- VOLTAGE..... 12 VDC
- BELT..... PV10
- STATIC TORQUE..... 35 Nm (3.5 kgfm)
- INITIAL AFTER BURNISHING..... 49 Nm (5 kgfm)
- MAX POWER CONSUMPTION..... 45W @ 25°C
- ROTATION DIRECTION..... CW OR CCW
- WEIGHT..... 2.25 Kg

**COMPRESSOR SPECIFICATIONS:**

- MODEL..... QP16HD
- NUMBER OF CYLINDERS..... 6
- BORE X STROKE..... 36 X 26 3/4 mm
- DISPLACEMENT..... 162.9 cm<sup>3</sup>/REV
- SPEED RANGE..... 700 - 6000 RPM
- ROTATION DIRECTION..... CW
- REFRIGERANT..... R-134a
- LUBRICANT..... PAG 46 180+20cm<sup>3</sup>
- WEIGHT..... 4.7 Kg

UNLESS OTHERWISE SPECIFIED DIMENSIONS ARE IN MM PER INTERPRET DIM AND TOL PER ASME Y14.5M - 1994



| THIRD ANGLE PROJECTION | CAD GENERATED DRAWING; DO NOT MANUALLY UPDATE | TITLE                |
|------------------------|---|----------------------|
|                        | DATE: 02/08/08                                | COMPRESSOR ASSEMBLY  |
| FINISH                 | ENG APPVL                                     | QP16HD V-3/4 7/8     |
|                        |   | PV10 119mm 12V 3-EYE |

| SCALE | SIZE | CODE IDENT NO | DWG NO    | SHEET | OF |
|-------|------|---------------|-----------|-------|----|
| NONE  | A    |               | QP16-1716 | 1     | 3  |