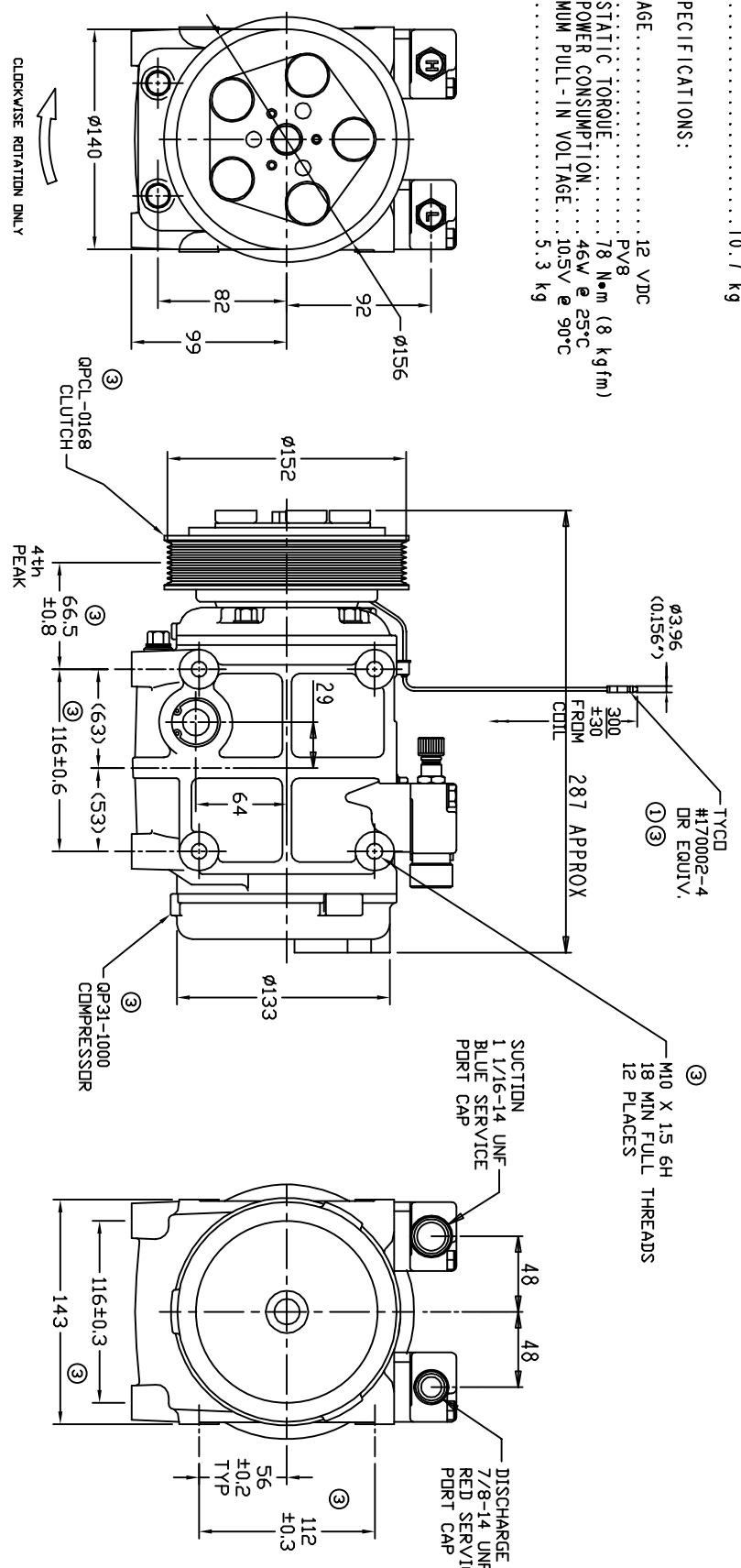


COMPRESSOR SPECIFICATIONS:

1. MODEL.....QP31
2. NUMBER OF CYLINDERS.....10
3. BORE X STROKE.....36 X 30.7 mm
4. DISPLACEMENT.....313 cm<sup>3</sup>/rev
5. SPEED RANGE.....700 - 5000 RPM
6. ROTATION DIRECTION.....CLOCKWISE
7. REFRIGERANT.....R-134a
8. LUBRICANT.....PAG 46 500+30 cm<sup>3</sup> ②
9. MASS.....10.7 kg

CLUTCH SPECIFICATIONS:

1. VOLTAGE.....12 VDC
2. BELL.....PV8
3. MIN STATIC TORQUE.....78 N•m (8 kgfm)
4. MAX POWER CONSUMPTION.....46W @ 25°C
5. MINIMUM PULL-IN VOLTAGE.....10.5V @ 90°C
6. MASS.....5.3 kg



REVISIONS

CHANGE ORDER	LTR	DESCRIPTION	DATE	APPROVED
ENG	1	ADDED BULLET CONNECTOR & 300mm	08/13/07	
009023	2	DILL PAG 46 VAS PAG 100	09/25/08	
00930, 33, 34	3	ADDED TOLERANCES, PART NOS, SMALL BULLET	11/23/09	

UNLESS OTHERWISE SPECIFIED DIMENSIONS ARE IN MM. PER INTERPRET DIM AND TOL. PER ASME Y14.5M - 1994

CAD GENERATED DRAWING; DO NOT MANUALLY UPDATE

THIRD ANGLE PROJECTION

FINISH

DRWN: GLB DATE: 08/13/07

CHECKED: APPROVED

ENG APPVL

**DOVE PRODUCTS, LLC**

TITLE: COMPRESSOR ASSEMBLY

QP31

PV8 152MM 12V 5-EYE

SCALE: NONE

SHEET 1 OF 1

REV 3