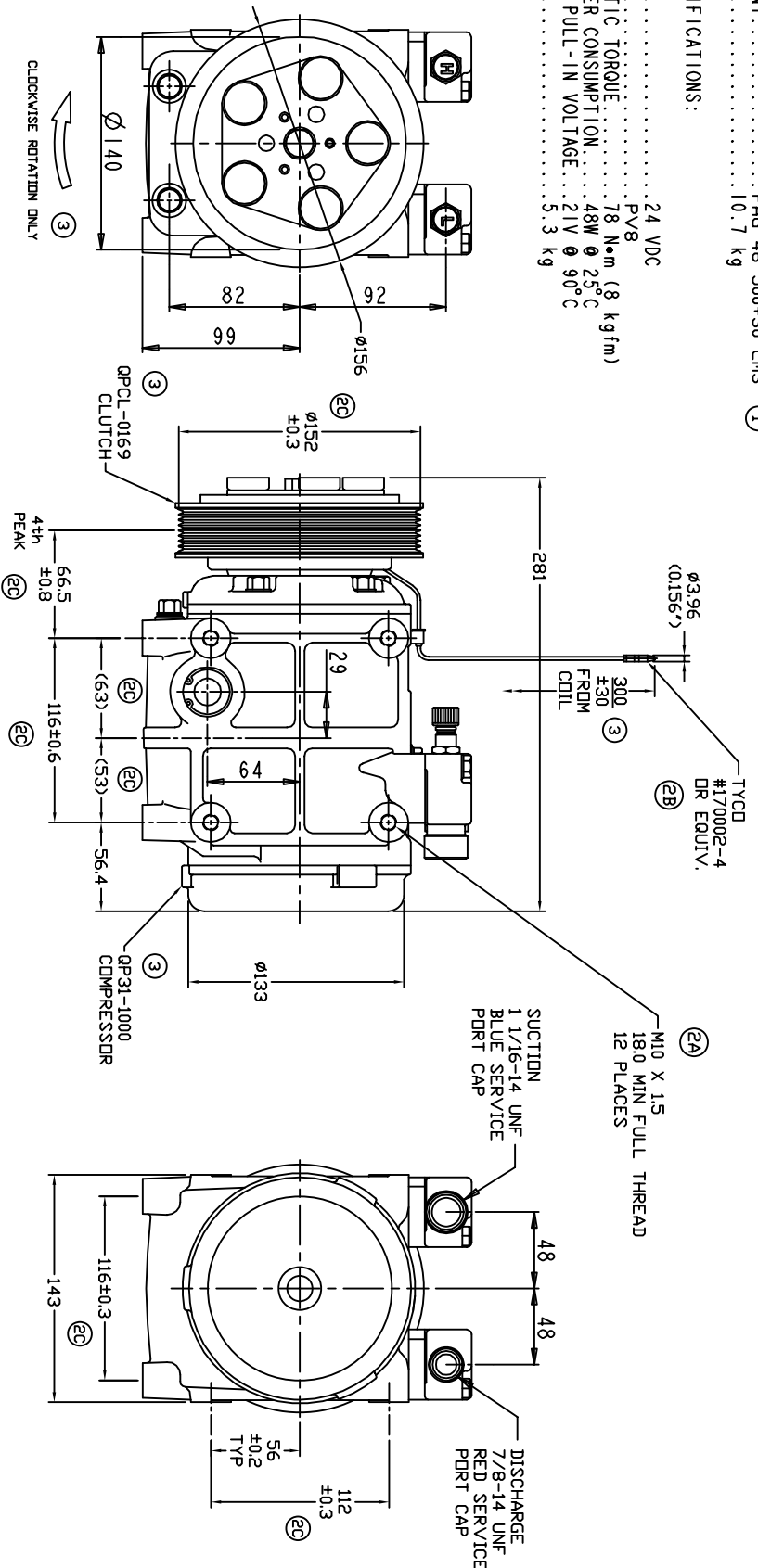


COMPRESSOR SPECIFICATIONS:

1. MODEL..... GP31
2. NUMBER OF CYLINDERS..... 10
3. BORE X STROKE..... 36 X 30.7 mm
4. DISPLACEMENT..... 313 cm³/rev
5. SPEED RANGE..... 700 - 5000 RPM
6. ROTATION DIRECTION..... CLOCKWISE
7. REFRIGERANT..... R-134a
8. LUBRICANT..... PAG 46 500+30 cm³ ①
9. MASS..... 10.7 kg

CLUTCH SPECIFICATIONS:

1. VOLTAGE..... 24 VDC
2. BELT..... PV8
3. MIN STATIC TORQUE..... 78 N•m (8 kgfm)
4. MAX POWER CONSUMPTION..... 48W @ 25°C
5. MINIMUM PULL-IN VOLTAGE..... 21V @ 90°C
6. MASS..... 5.3 kg



REVISIONS

CHANGE ORDER	LTR	DESCRIPTION	DATE	APPROVED
008023	1	PAG 46 WAS PAG 100	08/26/08	
009030	2A	ADDED M10 X 1.5 X 18 MIN 12 PLACES	08/04/09	
009033	2B	ADDED CONNECTOR SPECS: $\varnothing 156$ #17002-4		
009034	2C	ADDED TOLERANCES	08/04/09	
ENG	3	ADDED PART NDS. CV ROTATION, 300 WAS 290	08/04/09	

UNLESS OTHERWISE SPECIFIED
DIMENSIONS ARE IN MM. PER
INTERPRET DIM AND TOL. PER
ASME Y14.5M - 1994

CAD GENERATED DRAWING,
DO NOT MANUALLY UPDATE

DOVE PRODUCTS, LLC

TITLE: COMPRESSOR ASSEMBLY
QP31
PV8 152mm 24V

THIRD ANGLE PROJECTION	DRAWN	GLB	DATE	TITLE	SCALE	SHEET	OF
	CHECKED		08/13/07	COMPRESSOR ASSEMBLY	NONE	1	1
	APPROVED						
	ENG APPVL						

FINISH	SIZE	CODE IDENT NO	DWG NO	REV
	A		QP31-1214	3