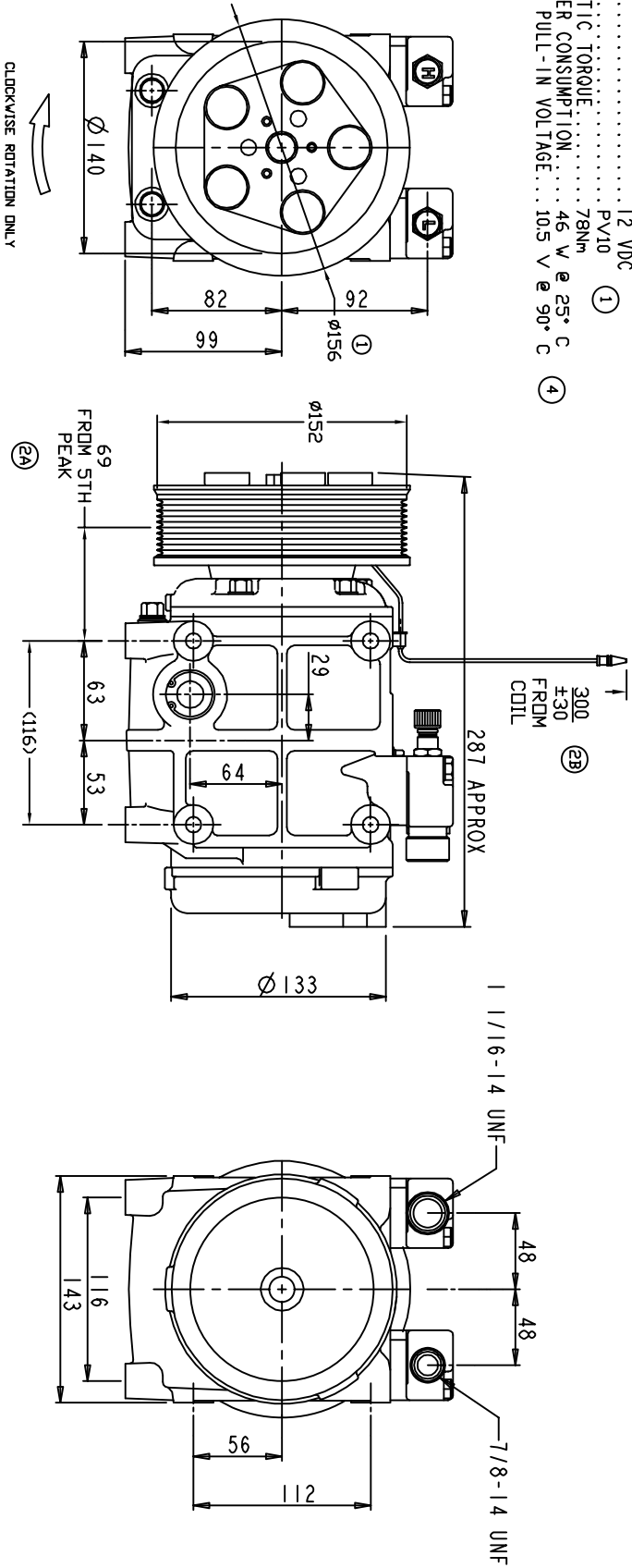


COMPRESSOR SPECIFICATIONS:

1. MODEL.....QP31
2. NUMBER OF CYLINDERS.....10
3. BORE X STROKE.....36 X 30.7 mm
4. DISPLACEMENT.....313 cm<sup>3</sup>/rev
5. SPEED RANGE.....700 - 5000 RPM
6. ROTATION DIRECTION.....CLOCKWISE
7. REFRIGERANT.....R-134a
8. LUBRICANT.....PAG 46 500+30 cm<sup>3</sup>
9. MASS.....10.7 kg

CLUTCH SPECIFICATIONS:

1. VOLTAGE.....12 VDC
2. BELT.....PV10 (1)
3. MIN STATIC TORQUE.....78N<sub>m</sub>
4. MAX POWER CONSUMPTION.....46 W @ 25° C (4)
5. MINIMUM PULL-IN VOLTAGE.....105 V @ 90° C



CHANGE ORDER		REVISIONS		
ORDER	LTR	DESCRIPTION	DATE	APPROVED
ENG	1	PV10 WAS 10K 156 WAS 155.4	10/09/07	
ENG	2A	69 FR 5th WAS 66.5 FR 4th 6"V	10/26/07	
ENG	2B	ADDED BULBIT CONNECTOR	10/26/07	
008023	3	PAG 46 WAS ZYL 100P6	09/25/08	
009029	4	ADDED CLUTCH SPECS	07/07/09	

UNLESS OTHERWISE SPECIFIED  
DIMENSIONS ARE IN MM PER  
INTERPRET DIM AND TOL PER  
ASME Y14.5M - 1994

**DOLE PRODUCTS, LLC**

TITLE: COMPRESSOR ASSEMBLY  
QP31

SIZE: CODE IDENT NO DWG NO  
PV10 152MM 12V 5-EYE QP31-1702

SCALE: NONE

THIRD ANGLE PROJECTION	DRAWN	GLB	DATE	CAD GENERATED DRAWING; DO NOT MANUALLY UPDATE
	CHECKED		03/08/07	
	APPROVED			
FINISH	ENG APPVL			